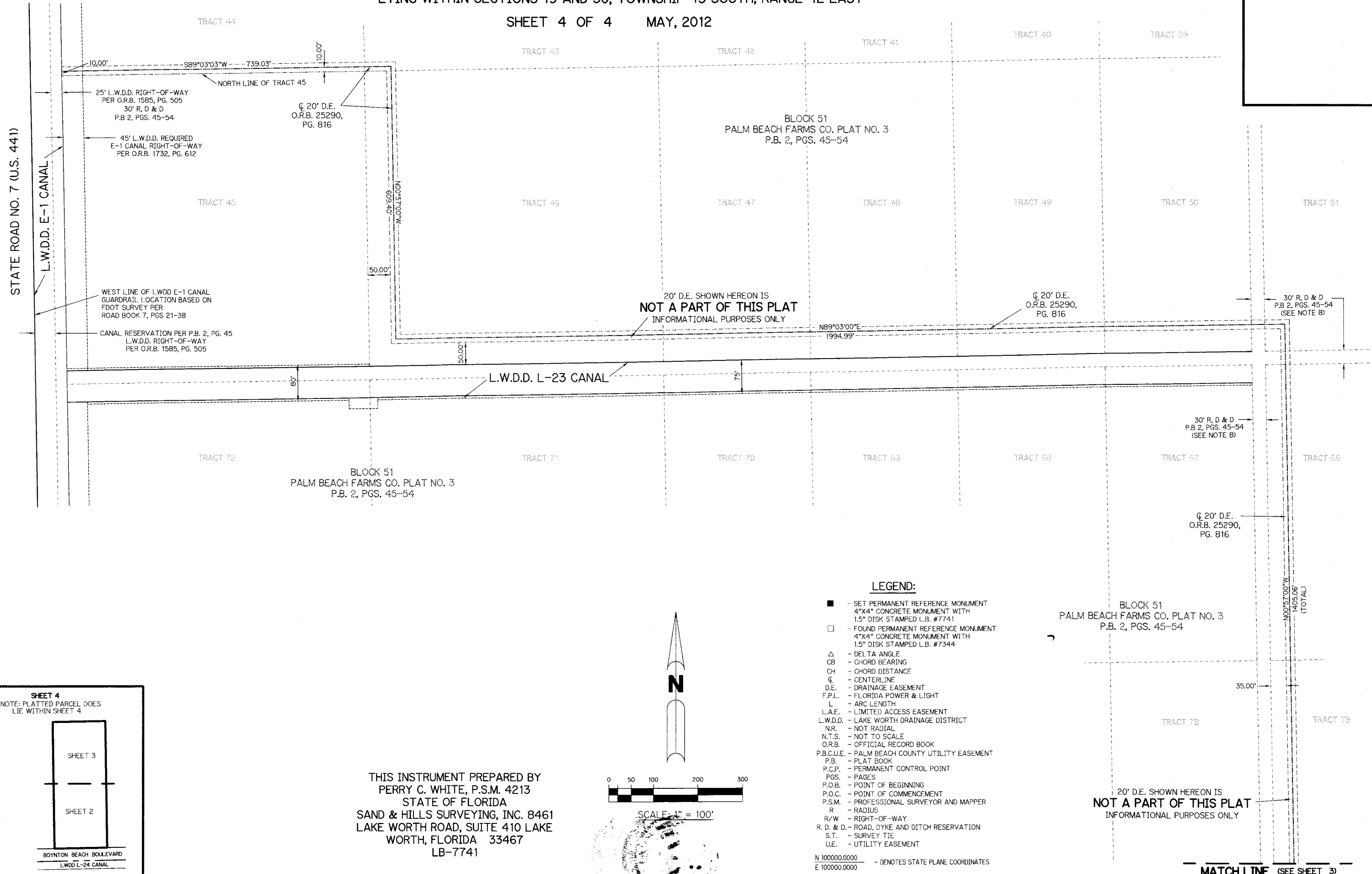


AMESTOY PLAT TWO - 14 ACRE PARCEL

BEING A REPLAT OF A PORTION OF TRACTS 93, 94, 105 AND 106 AND A PORTION OF ROAD, DYKE AND DITCH RESERVATION, 30 FEET IN WIDTH, ALL LYING WITHIN BLOCK 51, PALM BEACH FARMS CO. PLAT NO. 3, AS RECORDED IN PLAT BOOK 2, PAGES 45 THROUGH 54, PUBLIC RECORDS, PALM BEACH COUNTY, FLORIDA, LYING WITHIN SECTIONS 19 AND 30, TOWNSHIP 45 SOUTH, RANGE 42 EAST

SHEET 4 OF 4 MAY, 2012



STATE ROAD NO. 7 (U.S. 441)

L.W.D.D. E-1 CANAL

25' L.W.D.D. RIGHT-OF-WAY PER O.R.B. 1585, PG. 505 30' R, D & D P.B. 2, PGS. 45-54

45' L.W.D.D. REQUIRED E-1 CANAL RIGHT-OF-WAY PER O.R.B. 1732, PG. 612

WEST LINE OF LWDD E-1 CANAL GUARDRAIL LOCATION BASED ON FDOT SURVEY PER ROAD BOOK 7, PGS 21-38

CANAL RESERVATION PER P.B. 2, PG. 45 L.W.D.D. RIGHT-OF-WAY PER O.R.B. 1585, PG. 505

20' D.E. O.R.B. 25290, PG. 816

20' D.E. SHOWN HEREON IS NOT A PART OF THIS PLAT INFORMATIONAL PURPOSES ONLY

20' D.E. O.R.B. 25290, PG. 816

30' R, D & D P.B. 2, PGS. 45-54 (SEE NOTE 8)

30' R, D & D P.B. 2, PGS. 45-54 (SEE NOTE 8)

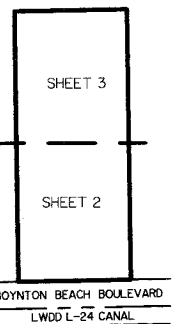
BLOCK 51 PALM BEACH FARMS CO. PLAT NO. 3 P.B. 2, PGS. 45-54

BLOCK 51 PALM BEACH FARMS CO. PLAT NO. 3 P.B. 2, PGS. 45-54

20' D.E. SHOWN HEREON IS NOT A PART OF THIS PLAT INFORMATIONAL PURPOSES ONLY

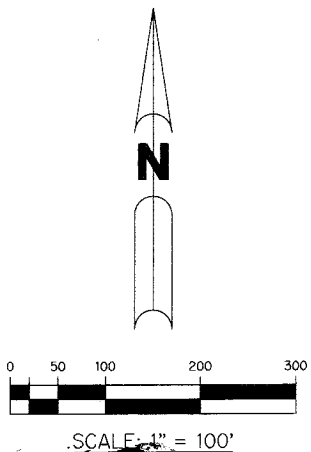
MATCH LINE (SEE SHEET 3)

SHEET 4 NOTE: PLATTED PARCEL DOES LIE WITHIN SHEET 4



KEY MAP N.T.S.

THIS INSTRUMENT PREPARED BY PERRY C. WHITE, P.S.M. 4213 STATE OF FLORIDA SAND & HILLS SURVEYING, INC. 8461 LAKE WORTH ROAD, SUITE 410 LAKE WORTH, FLORIDA 33467 LB-7741



LEGEND:

- - SET PERMANENT REFERENCE MONUMENT 4"x4" CONCRETE MONUMENT WITH 1.5" DISK STAMPED L.B. #7741
- - FOUND PERMANENT REFERENCE MONUMENT 4"x4" CONCRETE MONUMENT WITH 1.5" DISK STAMPED L.B. #7344
- Δ - DELTA ANGLE
- CB - CHORD BEARING
- CH - CHORD DISTANCE
- CL - CENTERLINE
- D.E. - DRAINAGE EASEMENT
- F.P.L. - FLORIDA POWER & LIGHT
- L - ARC LENGTH
- L.A.E. - LIMITED ACCESS EASEMENT
- L.W.D.D. - LAKE WORTH DRAINAGE DISTRICT
- N.R. - NOT RADIAL
- N.T.S. - NOT TO SCALE
- O.R.B. - OFFICIAL RECORD BOOK
- P.B.C.U.E. - PALM BEACH COUNTY UTILITY EASEMENT
- P.B. - PLAT BOOK
- P.C.P. - PERMANENT CONTROL POINT
- PGS. - PAGES
- P.O.B. - POINT OF BEGINNING
- P.O.C. - POINT OF COMMENCEMENT
- P.S.M. - PROFESSIONAL SURVEYOR AND MAPPER
- R - RADIUS
- R/W - RIGHT-OF-WAY
- R. D. & D. - ROAD, DYKE AND DITCH RESERVATION
- S.T. - SURVEY TIE
- U.E. - UTILITY EASEMENT

N 1000000.0000 - DENOTES STATE PLANE COORDINATES E 1000000.0000